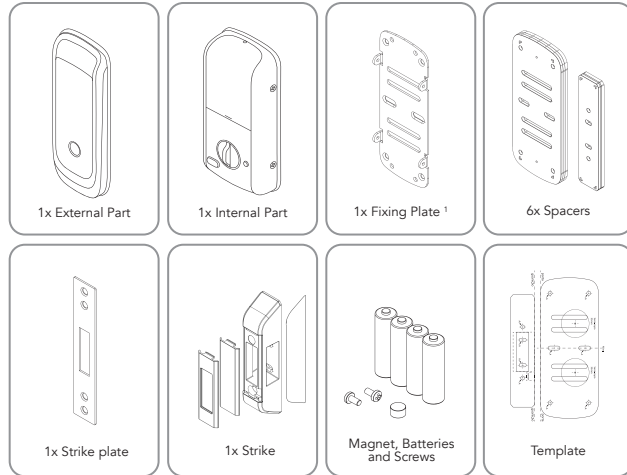


1. Product Overview

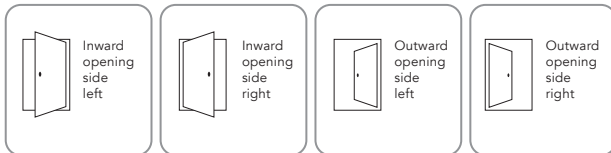
Identify the items below in the iDLock box.



¹ Fixing plate is secured to the internal part by four type C screws

2. Installation Scenarios

From inside the room where you want to install the lock, identify your door type.

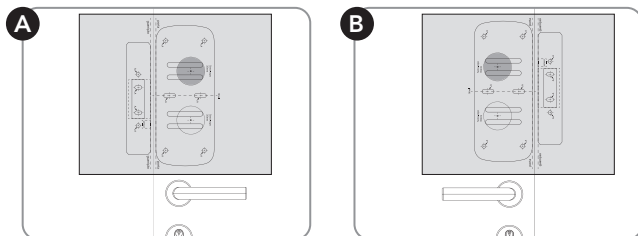


3. Installation Template

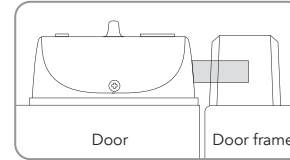
Position the template so that your installation scenario is located at the top of the sheet (see template).

3.1. Inward Opening

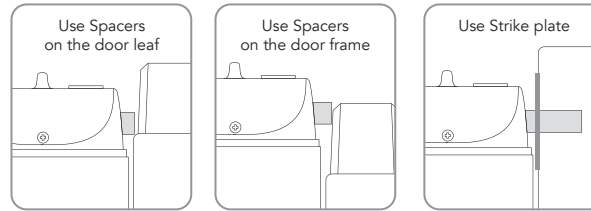
Position the template so that the dashed lines are aligned, mark the type A holes and the center point of the hole saw.



! Before drilling the holes, simulate the position of the internal part and the strike and make sure that both are aligned according to the image on the right.



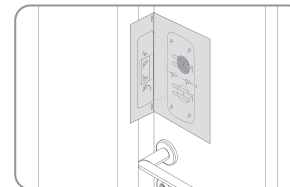
! If the parts are not aligned, use the spacers for cases that have up to 10mm of unevenness or the strike plate for cases that have more than 10mm of unevenness, as shown in the images below.



! Confirm that the bolt is positioned in the center (vertically and horizontally) relative to the strike. **The bolt must not touch or scrape the strike, in order to ensure correct operation.**

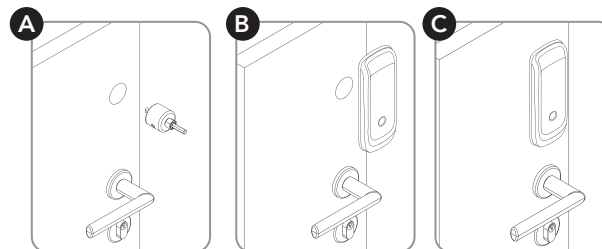
3.2. Outward Opening

a. Fold the template on the dashed line ("fold") and place it between the door and fittings.
b. Mark the type A holes and the central point of the hole saw



4. Central Hole and External Part Fixing

a. Drill the center hole with a 35mm hole saw.
b. Outside the the room, with the door closed, route the main cable and the metal pins through the hole.
c. Align and secure the outer part to the door with the double-sided tape that comes attached to the product.



! Make sure the finishing rubber is positioned between the external part and the door.

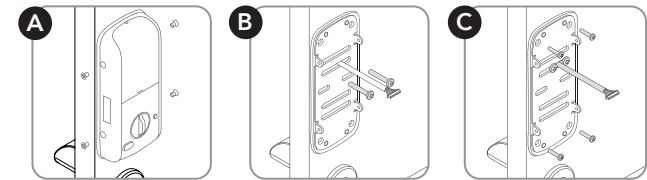
5. Fixing plate

a. Remove the four type C screws from the internal part and release the fixing plate
b. Route the cable through the rubber and the fixing plate and use two M5 screws (D/E/F/G/H model) to align the metal part with the initial markings on the template. Refer to the table on the right for the M5 screw model that suits your door.

Type	Door
D	22 to 30mm
E	27 to 35mm
F	32 to 40mm
G	37 to 45mm
H	42 to 50mm

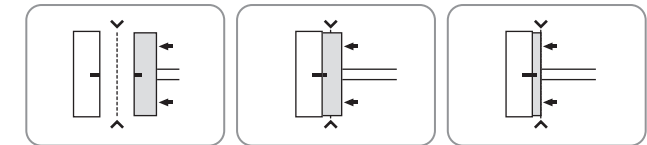
! If door thickness is between 15 and 22mm, use the internal part spacers and type D screws.

c. Use A1 screws to secure the fixing plate to the door.



6. Main Cable Connection

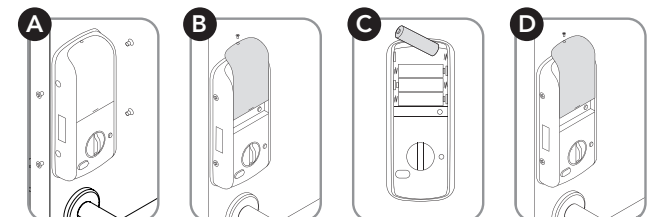
Insert the main cable into the connector located in the internal part, ensuring the black markings are on the same side.



! Insert the main cable connector over the dashed marking on the board to ensure a proper fit.

7. Fixing the Internal Part and Batteries

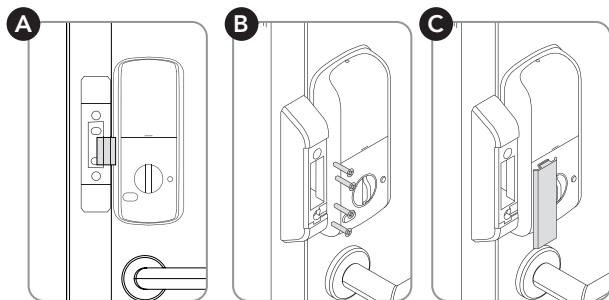
a. Use C-type screws to secure the internal part.
b. Remove the top screw with a Phillips screwdriver and open the battery compartment.
c. Install 4 AA batteries.
d. Close the cover and insert the screw.



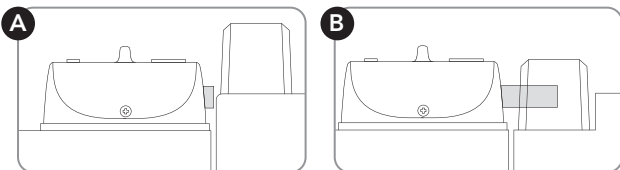
8.Positioning the Strike or Strike plate

8.1.Strike - Inward Opening

- a. Position the strike on the template markings and check the bolt fit and magnet alignment with the "SENSOR" sticker.
- b. Use type A2 screws to secure it to the door frame.
- c. Fit the finishing piece to complete the installation.

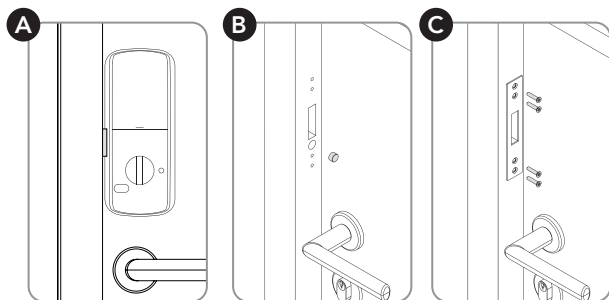


⚠ If it is not possible to align the strike and the inner part with or without the spacers (a), make a recess in the door frame to secure the strike using a flat drill and chisel (b).



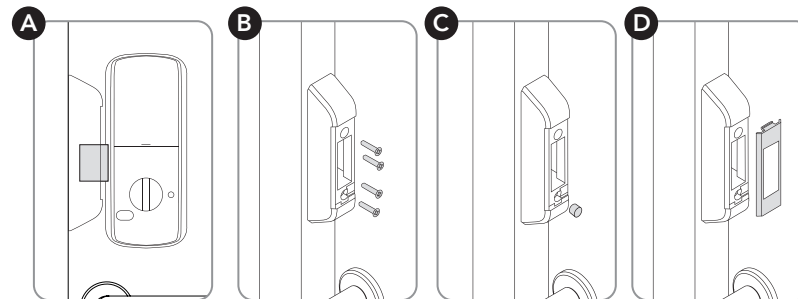
8.2.Strike plate

- a. Drill two holes in the jamb, one for the bolt and one for the magnet.
- b. Insert the cylindrical magnet towards the "SENSOR" sticker.
- c. Fix the strike plate with type A2 screws.



8.3.Strike – Outward Opening

- a. Position the strike by following the markings on the template and check the bolt fit and the magnet alignment.
- b. Use type A2 screws to secure it to the jamb.
- c. Fit the cylindrical magnet towards the "SENSOR" sticker
- d. Install the finishing pieces to complete the installation.



iDLock Keypad Commands

Use the table below to operate and set up the iDLock using the keypad. Fingerprint operations are only available on iDLock Bio.

Operations	Steps				
	1	2	3	4	5
Correct , Cancel or Return	Press '*'				
Confirm	Press '#'				
Enter menu using a password	Press '1' + '#'	Enter ADM password ¹			
Enter the fingerprint menu	Press '1' + '#'	Place ADM finger			
Password identification	Enter password	Press '#'			
Fingerprint identification	Place finger				
Register administrator password	Enter menu	Press '1' + '#'	Enter ID (1 - 499) + '#'	Type password + '#'	Confirm password + '#'
Register adm fingerprint ^{2 3}	Enter menu	Press '1' + '#'	Enter ID (1 - 499) + '#'	Place finger 3 times	
Register regular user password	Enter menu	Press '2' + '#'	Enter ID (1 - 499) + '#'	Type password + '#'	Confirm password + '#'
Register regular user fingerprint ^{2 3}	Enter menu	Press '2' + '#'	Enter ID (1 - 499) + '#'	Place finger 3 times	
Delete user by ID	Enter menu	Press '3' + '#'	Enter ID (1 - 499) + '#'		
Delete Password	Enter menu	Press '4' + '#'	Type password + '#'	Confirm password + '#'	
Delete Fingerprint	Enter menu	Press '4' + '#'	Place finger		
Delete all users	Enter menu	Press '5' + '#'	Enter '228855' + '#'		
Automatic closing	Enter menu	Press '6' + '#'	OFF: '0'+ '#' ON: '1'+ '#'		
Buzzer volume	Enter menu	Press '7' + '#'	Up '3' Down: '6'		
Restore factory settings	Enter menu	Press '8' + '#'	Enter '228855' + '#'		

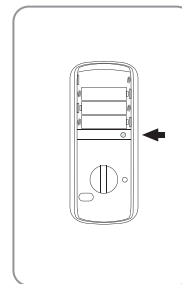
¹ Standard password is 1234 ² Using the index finger for registration is recommended. Press your finger firmly and always position it in the same way on the biometric reader.

³ Maximum 10 different fingerprints per user

Restore factory settings

To restore factory settings manually, follow the steps below:

- a. Remove one of the AA batteries.
- b. Hold the "Menu" button (see image)
- c. Reinsert the AA battery while holding the button, and wait for the 3 beeps.
- d. Close the battery compartment and use iDLock normally.



Low Battery

When the batteries reaches the end of its life, the low battery icon will light up in red, on the upper-right corner of the iDLock.



When you notice this warning, replace the current set of batteries with a new set immediately.

⚠ If the batteries are fully discharged, use a 9V battery to power the lock temporarily.